

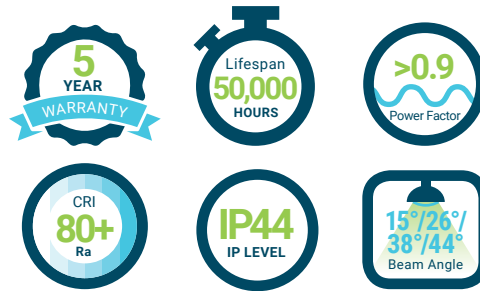
# TRACK LIGHT

PQ-TKB- PQ-TKBA

LED track lights offer many advantages over traditional lighting systems. They provide maximum energy efficiency and uniform lighting. Because of their longevity, LEDs are characterized by low operating and replacement costs.

LEDs produce very little UV radiation and light up immediately as they are switched on. LED track lighting systems are modern, intelligent, cost-efficient, powerful and provide intensive, clear light. They are ideal for the illumination of exhibits and general lighting applications.

This LED track lights offers options at 15°, 26°, and 44° beam angle, which do not require the use of additional lenses or reflectors.



## LISTINGS



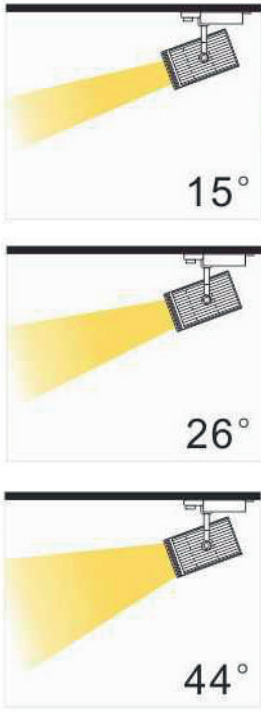
## SPECIFICATIONS

Power Consumption	45W/70W	Color temperature	3000K ~ 5000K
Nominal luminous flux (lm)	3600 ~ 6800	CRI (Ra)	>80
Frequency (hz)	50/60	Rating	IP44
Power Factor	> 0.9	Dimension	φ 135x205 mm
Lumen Maintenance factor	L70	Material	Aluminium
Dimmable function	Non-Dimmable / Dimmable	Weight (g)	2600
Nominal Beam Angle	15°/26°/44° or 24°~ 60°	Energy Efficiency Index	A++
Operation Temp.	-20°C to 48°C	Energy consumption (kWh/1000h)	45/70
Nominal lamp life time	50000 hrs	Certification	CE

# TRACK LIGHT

PQ-TKB / TKBA

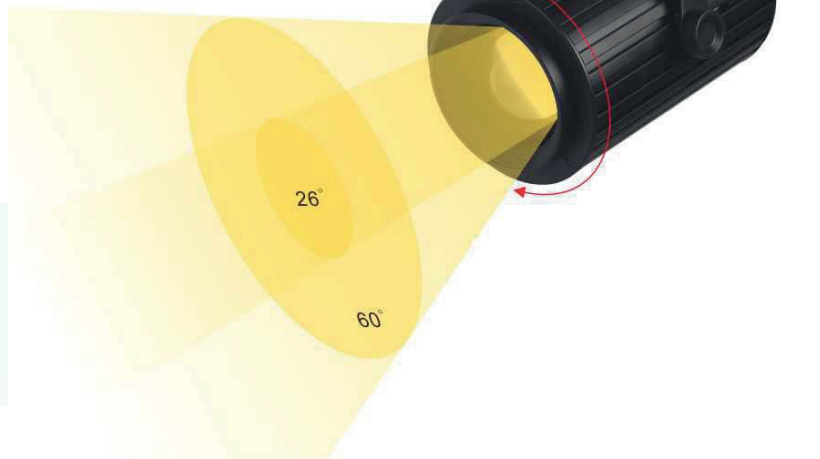
## ADJUSTABLE BEAM ANGLE OPTION



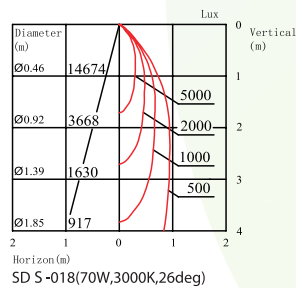
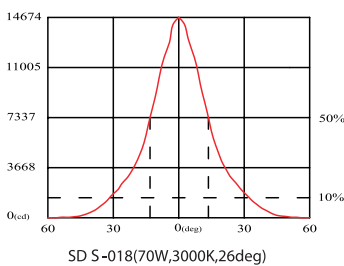
Beam Angle Range



Opens from 15° to 26° to 44°



## LIGHT DISTRIBUTION



## DIMENSIONS

