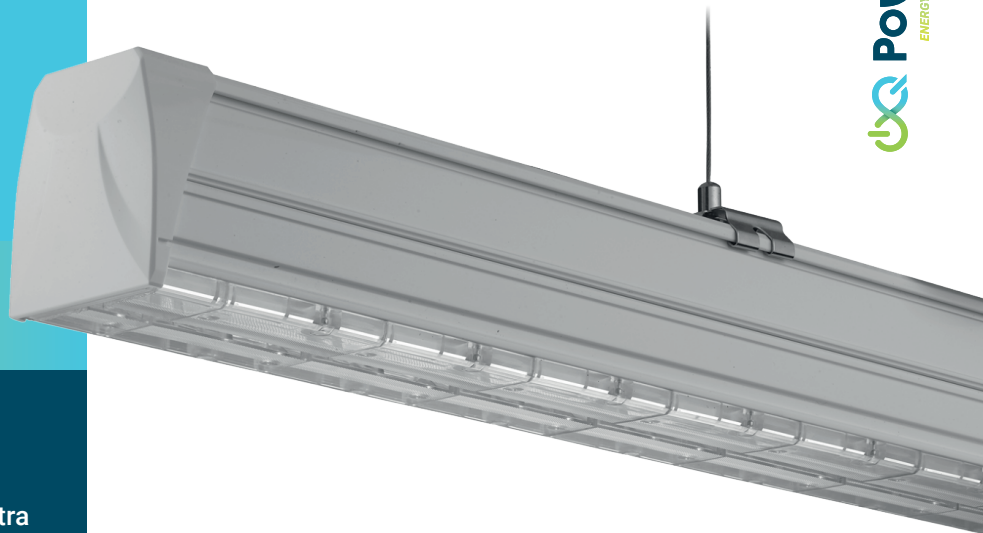


# LINKING SYSTEM

## PQ-LIKL

- Modular concept consisting of linking rails, luminaire inserts and accessories
- High luminous efficiency up to 130lm/W, no extra accessories such as reflectors or louvers required
- Aluminum housing, good thermal conductivity design with ample heat sink area up to 106 cm<sup>2</sup>/W
- High efficiency isolated driver, no RF interference with bipolar driver design
- Long lifespan. up to 10 years
- Protection rate IP42
- Color: white, black or silver



### LISTINGS



### LUMINAIRE

#### SPECIFICATIONS

Power	16/26/32/40/65/80 W	Working Temperature	-30°C ~ 40°C
LED Light Source	Philips/CREE/Osram	IP Rating	IP 42
Led Luminous Efficiency	130 lm/W	Lifespan	+50000 H
Color Temperature	3000/4000/5000/6000K	Color	Black, White, Silver
Color Rendering Index	> 80	Power factor	> 0.95
Warranty	5 years	Wire quantity	5/7/11-Core

**Dimensions: 16W – 26W – 32W – 40W – 65W – 80W**

L 568 x W 73 mm

L 1414 x W 73 mm

# LINKING SYSTEM

## PQ-LIKL

### BEAM ANGLE



Sharp  
( 25° )



Narrow  
( 60° )



Wide  
( 90° )



Flat  
( 120° )



Asymmetric  
( left or right )



Asymmetric  
( Right or right )



Double asymmetric

### RAIL

PART NUMBER	WIRE QUANTITY	LENGTH (mm)	WEIGHT (g)	FUNCTION
PQ-LIKL-S605	5-Core	570	610	Linking rail
PQ-LIKL-S155		1416	1068	Linking rail
PQ-LIKL-S305		2832	-	Extended rail
PQ-LIKL-S455		4248	-	Extended rail
PQ-LIKL-S155C		1416	-	Central feed in rail *
PQ-LIKL-S5T		178	-	Terminal feed in box **
PQ-LIKL-S607	7-Core	570	680	Linking rail
PQ-LIKL-S157		1416	1380	Linking rail
PQ-LIKL-S307		2832	-	Extended rail
PQ-LIKL-S457		4248	-	Extended rail
PQ-LIKL-S157C		1416	-	Central feed in rail *
PQ-LIKL-S7T		178	-	Terminal feed in box **
PQ-LIKL-S6011	11-Core	570	750	Linking rail
PQ-LIKL-S1511		1416	1690	Linking rail
PQ-LIKL-S3011		2832	-	Extended rail
PQ-LIKL-S4511		4248	-	Extended rail
PQ-LIKL-S1511C		1416	-	Central feed in rail *
PQ-LIKL-S11T		178	-	Terminal feed in box **

\* Central feed in rail : for supplementary electrical feed in, in central area of a linking rail arrangement

\*\* Terminal feed in box : for supplementary electrical feed in, in terminal of a linking rail arrangement

# LINKING SYSTEM

PQ-LIKL

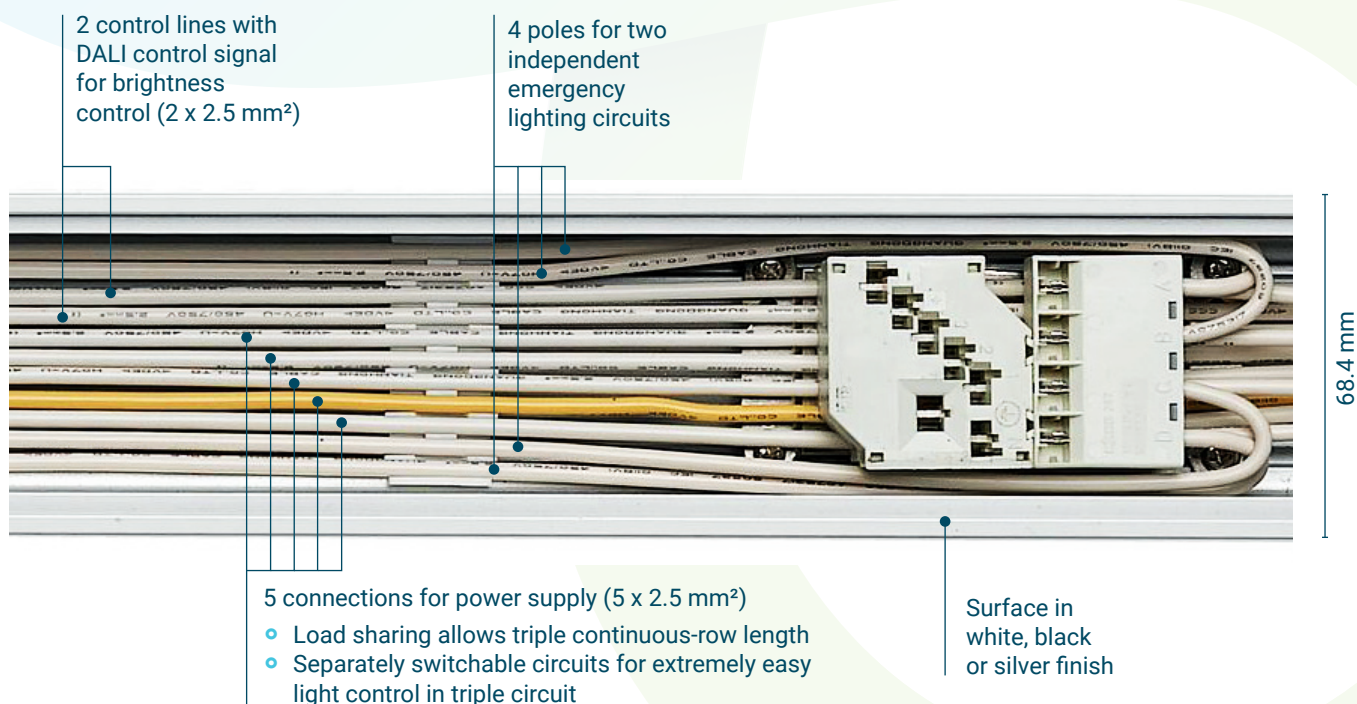
## WIRING MODE OPTIONS

MODE	WIRE QUANTITY	FUNCTION
1	5-Core	Standard
2	7-Core	Standard
3		Standard + Dali
4		Standard + 1-10V
5		Standard + Battery
6	11-Core	Standard
7		Standard + Dali
8		Standard + 1-10V
9		Standard + Battery
10		Standard, Dali, Battery + Emergency 1
11		Standard, 1-10V, Battery + Emergency 1
12		Standard, Battery, Emergency 1 + Emergency 2

Luminaire with 11-core wiring must exclusively connect with corresponding 11 wires linking rail, same for the other options. Luminaire with 5-core wiring connector may insert to 7 wire linking rail though.

### EMERGENCY FUNCTION:

2 independent circuits connected to generator or safety battery supply illuminate at 100% brightness. Self contained battery is optional for each lamp and illuminate with reduced 6W or 12W wattage.



# LINKING SYSTEM

## PQ-LIKL

### DRIVER

#### Standard & Dimming driver

##### SPECIFICATIONS

Input Voltage	AC 100-240 V	Output Voltage	DC 34-40 V
Power factor	0.95	Lifespan	50000 H
Working Temperature	-20°C ~ 40°C	Working Humidity	10% ~ 80%
Warranty	5 years		

PART NUMBER	POWER (W)	RAIL LENGTH (mm)	IN/OUT CURRENT (A)	FUNCTION
PQ-LIKL6-XXK-40W-S	40	570	0.5 / 1	Standard
PQ-LIKL15-XXK-40W-S	40	1416	0.5 / 1	Standard
PQ-LIKL6-XXK-65W-S	65	570	0.8 / 1.6	Standard
PQ-LIKL15-XXK-65W-S	65	1416	0.8 / 1.6	Standard
PQ-LIKL6-XXK-80W-S	80	570	1 / 2	Standard
PQ-LIKL15-XXK-80W-S	80	1416	1 / 2	Standard
PQ-LIKL6-XXK-65W-D	65	570	0.5 / 1.6	1-10V dimming
PQ-LIKL15-XXK-65W-D	65	1416	0.5 / 1.6	1-10V dimming
PQ-LIKL6-XXK-65W-DA	65	570	0.5 / 1.6	DALI dimming
PQ-LIKL15-XXK-65W-DA	65	1416	0.5 / 1.6	DALI dimming

XX= Color Temperature : 31K=3000-3500K 41K=4000-4500K 51K=5000-5500K 61K=6000-6500K

#### Emergency driver

##### SPECIFICATIONS

Input Voltage	AC 100-277 V
Power	6/12 W
LED output voltage	DC 27-38 V
LED output current	175/325 mA
Working Temperature	-20°C ~ 40°C
Warranty	5 years
Input Current	150 mA
Discharging efficiency	≥ 90 %
Battery output voltage	DC 12-18 V
Charging current	200/360 mA
Lifespan	50000 H
Working Humidity	10% ~ 80%

PART NUMBER: **PQ-LIKL-DR-6 OR 12**

#### Battery Pack

##### SPECIFICATIONS

Voltage	14.4 V
Energy	26/52 Wh
Capacity	21.6/43.2 Ah
Cell quantity	12/24 pcs
Warranty	2 years
Voltage per cell	1.2 V
Capacity per cell	1800 mAh
Cell Temp (2 years life)	0°C ~ 70°C
Cell mode	Ni-MH AA

PART NUMBER: **PQ-LIKL-BAT-12 OR 24**

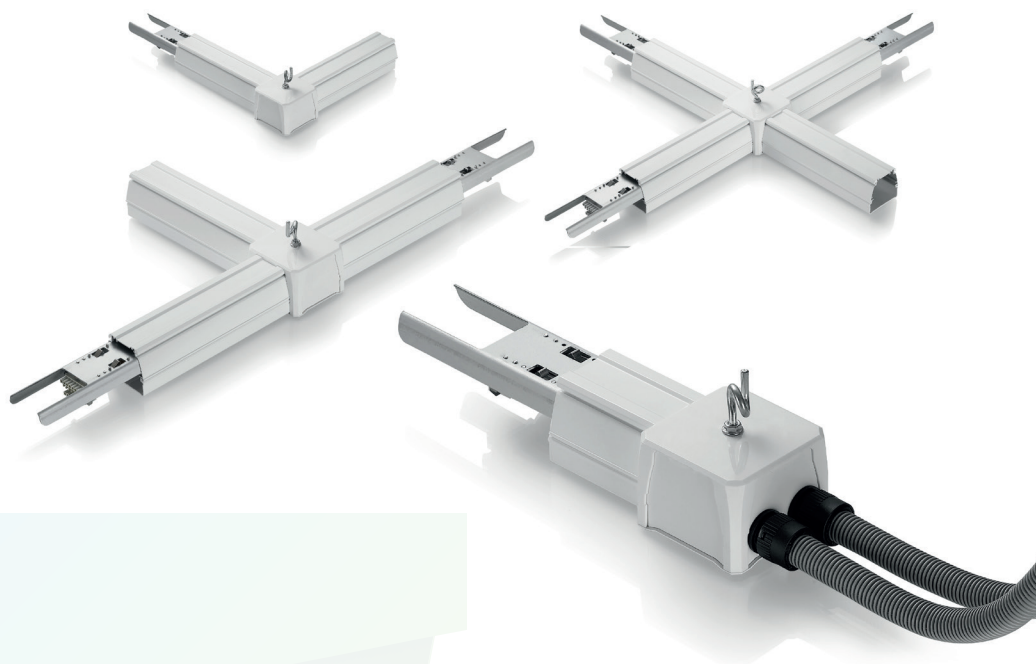
# LINKING SYSTEM

PQ-LIKL

## NODE CONNECTOR

All system components can be combined without tools.

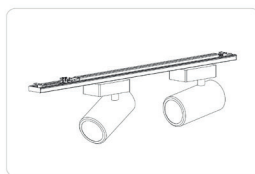
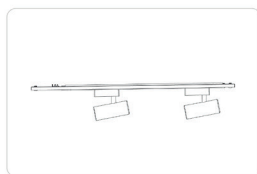
X, T and L connectors expand the system's application range.



## TRACK SPOT LIGHT

3 separate switchable circuits

System size =  
570mm / 1415mm



# LINKING SYSTEM

PQ-LIKL

## ACCESSORIES



### BLANK COVER

For mounting to linking rail, used to close the spaces where no electrical units are mounted.

Size: 570mm & 1416mm  
Color: White/Black/Silver



### END CAP

To clip onto end of linking rail and luminaire.

Size: 80\*73\*32mm Color: White/Black/Silver



### CABLE PIPE

To conceal power feed in wires.  
Max 7 wires for each pipe.



### WATERPROOF CONNECTOR

To connect power supply wire to linking rail.



### FEMALE WIRE CONNECTOR

For electrical connection of luminaire with linking rail.

3 / 5 / 9 Pins plug / socket pair.



### MALE WIRE CONNECTOR

For electrical connection of luminaire with linking rail.

3 / 5 / 9 Pins plug / socket pair. "L" Pin for triple circuit.



### TERMINAL BLOCK

For electrical connection between two linking rails.

5 / 7 / 11 core for corresponding linking rail.



### CABLE CONNECTOR

For electrical connection of single wire.