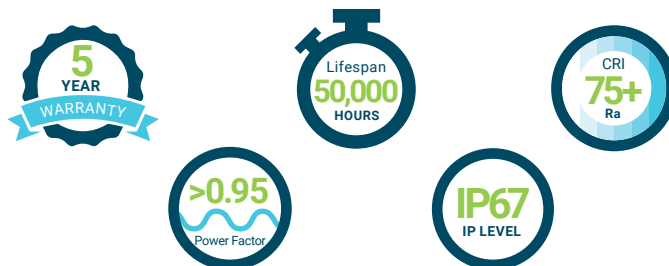
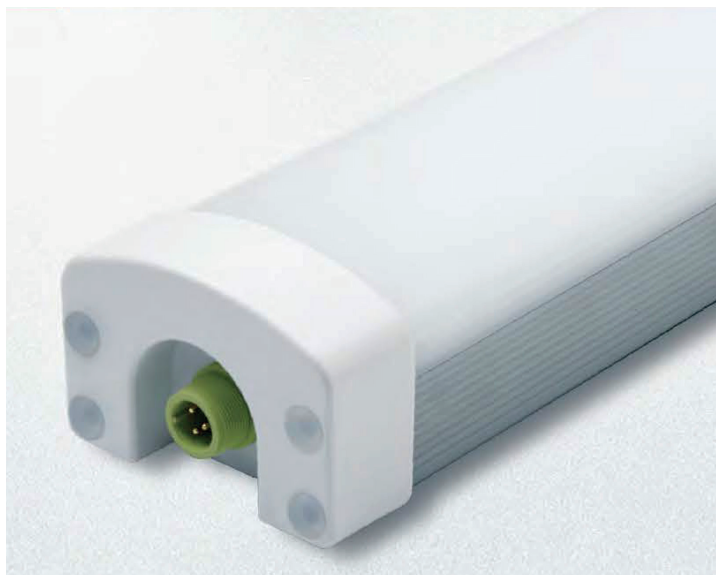


LINEAR TRI-PROOF

PQ-LITR

- With IP65 IK08 design, waterproof, dustproof, pressure-proof and corrosion-proof
- Widely used in workshops, parking areas, garages, airports, MTR stations, supermarkets, tunnels, exhibition centers, gymnasiums, etc.
- Emergency battery backup: Optional upgrades available.



SPECIFICATIONS

Input Voltage	90-305 V, 200-480V	Color Temperature	3000K-6500K
LED Light Source	Philips/CREE/Osram	IP Rating	IP65
Luminous Efficiency	110-130 lm /W	Life-span	50000 h
Color Rendering Index	>80	Light Fixture Color	Gray and white
Warranty	5 ans	Power factor	≥0.95
Beam angle	120°	Materials	AL+PC

MODEL	LED POWER (W)	LUMENS	LENGTH
PQ-LITR1-20W	20	2400	1 ft
PQ-LITR2-30W	30	3600	2 ft
PQ-LITR3-40W	40	4800	3 ft
PQ-LITR4-40W	40	4800	4 ft
PQ-LITR4-60W	60	7200	4 ft
PQ-LITR5-80W	80	9600	5 ft
PQ-LITR6-90W	90	10800	6 ft
PQ-LITR8-120W	120	14400	8 ft

LISTINGS

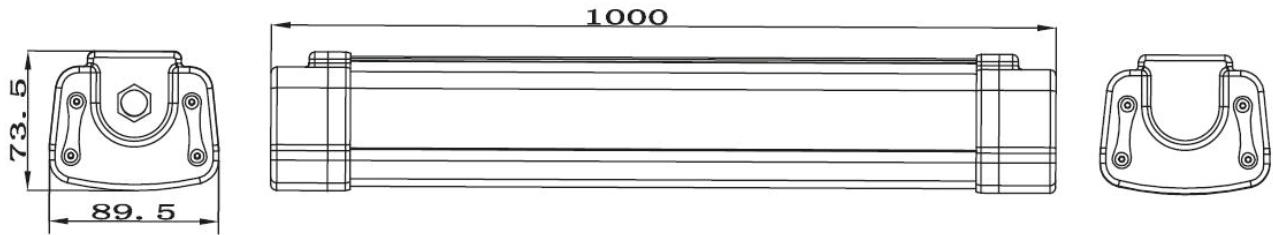


XX= Color Temperature 31K=3000-3500K 41K=4000-4500K 51K=5000-5500K 61K=6000-6500K
ADD at the end Voltage 120V, 240V or 347V

LINEAR TRI-PROOF

PQ-LITR

DIMENSIONS



STRUCTURE

