

# HIGH TEMP LED LINEAR HIGHBAY

## PQ-HBHFY



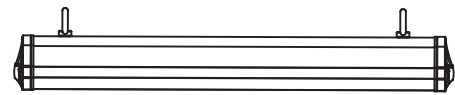
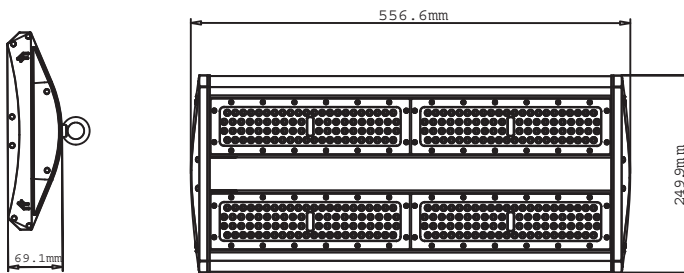
High sensitivity temperature control protection system

- High temperature LED linear highbay used for high temperature applications like steel plants and foundries, metal processing and boiler rooms
- At 80°C protection mode, the luminaire dims to a safe level to avoid damaging electronic components
- High efficacy 140-150lm/w
- Aluminum heatsink
- Full 65°C ambient rating



### SPECIFICATIONS

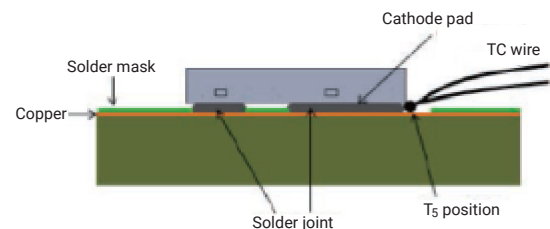
Input voltage	AC100-277V / AC200-480V – 50/60Hz	Beam angle	15°/25°/60°/90°/120° / 30°x15°/49°x21°/136°x78°
Power factor	>0.95	CRI	Ra >70 / Ra >80
Working temperature	-40°C~65°C	Housing color	Black, White
Lumen efficacy	140-150 lm/w	Lifespan	>50,000 hours @L70
Color temperature	3000K-6500K		



MODEL	POWER	LUMENS	FIXTURE DIMENSIONS
PQ-HBHFY-XXK-80	80W	11200~12000 lm	556 x 250 x 69 mm
PQ-HBHFY-XXK-100	100W	14000~15000 lm	
PQ-HBHFY-XXK-160	160W	22400~24000 lm	810 x 250 x 69 mm
PQ-HBHFY-XXK-200	200W	28000~30000 lm	

XX= Color Temperature 31K=3000-3500K 41K=4000-4500K 51K=5000-5500K 61K=6000-6500K

### TEMPERATURE MEASUREMENT POINT (TMP)



# HIGH TEMP LED LINEAR HIGHBAY

PQ-HBHFY

## APPLICATIONS



## IN-SITU TEMPERATURE MEASUREMENT TEST CONDITIONS

TEMPERATURE (°C)	VOLTAGE (VAC)	FREQUENCY (HZ)	CURRENT (A)	POWER (W)	POWER FACTOR	ORIENTATION
65.5°	120.00	60	0.82	96.58	0.98	Horizontal

## TEST RESULTS (LED)

THERMOCOUPLE LOCATION	MANUFACTURER DECLARED CURRENT (mA)	TEMPERATURE OF LIGHTING SOURCE (°C)		LED MODEL NUMBER	LM-80 UNIT CURRENT (mA)	LM-80 UNIT TEMPERATURE (°C)
		TEST RESULT COLUMN 1	TEST RESULT CORRECT TO 65°			
TMP of LED1	50	77.0	76.5	LUXEON 3030 2D	65	105
TMP of LED2	50	82.8	82.3			
Ambient temperature	N/A	65.0	65.0			

## TEST RESULTS (DRIVER)

THERMOCOUPLE LOCATION	TEMPERATURE OF DRIVER (°C)		DRIVER MODEL NUMBER	DRIVER UNIT TEMPERATURE (°C)
	TEST RESULT COLUMN 1	TEST RESULT CORRECT TO 65°		
Tc of Driver	76.4	75.9	FY-DR-38VxAxx-210WDW	105
Ambient temperature	65.5	65.0		