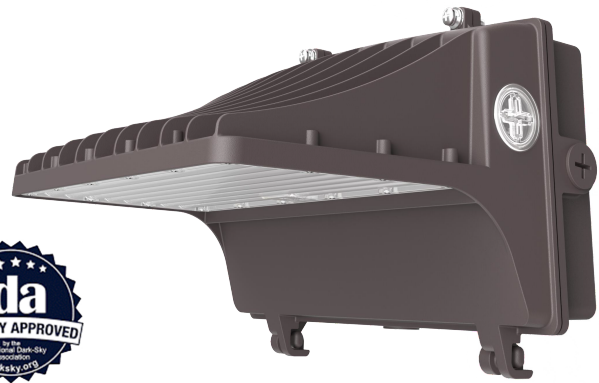


OUTDOOR LED FULL CUT-OFF WALL PACK

PQ-WKDZ2

Light up your outdoor area with Power-Q's LED Full Cut-Off Wall Pack. It is a high efficiency, long-lasting and energy-saving lighting solution. The rugged housing offers advanced thermal management and protection against outdoor environments without compromising aesthetics.



SPECIFICATIONS

Input voltage	120-347V	Power Fact	≥0.90
Color kelvin	3000-4000-5000K (2200-4000-5000K)	Frequency	50/60 Hz
Efficacy	150 lm/w	Certification	DLC Premium, UL
THD	<20%	Housing	Diecast aluminum
Surge protection	L/N 6KV, L/N-PE 6KV, L/N 4KV, L/N-PE 6KV for 40W	Finish	Black/Bronze
LED type	SMD 2835	Dimmable	0-10V
Light distribution	Type III	Lifetime	L70 @ 50,000 hrs
Operating temperature	-40°C to +50°C (-40°F to 122°F)	Warranty	5 years
CRI	RA >80	Photocell	Integrated
IP Rating	IP65		

MODEL

4 WATTAGES SELECTABLE

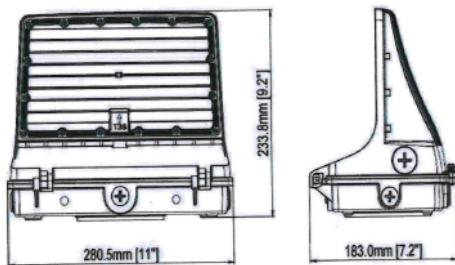
LUMENS

PQ-WKDZ2

40-50-60-80W 6000/7500/9000/12000 lm

60-90-100-120W 12000/13500/15000/18000 lm

DIMENSIONS



11"



FULL CUT OFF WALLPACK

PQ-WKDZ2

FEATURES

Die-cast aluminium housing

Durable housing provides good heat dissipation.



Field-adjustable CCT

3CCT Selectable : 3000K/4000K/5000K

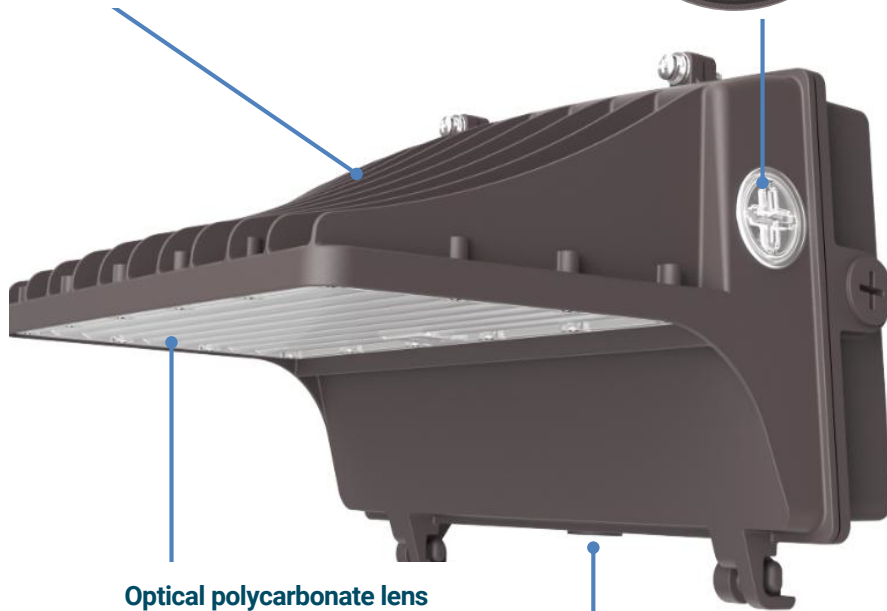
Photocell ON/OFF

Field-adjustable wattage

4Wattage selectable

Optical polycarbonate lens

IDA Standard Full cut-off wall pack.



Microwave motion sensor



Wall pack with glare shield



ORDERING GUIDE

Model	Color Temperature (CCT)	Power (W)	Input Voltage	Finish	Integrated Photocell
PQ-WKDZ2	3CCTK= Standard: 3000K/4000K/5000K Customized: 3CCTKS 2200K/4000K/5000K	80TW= 40/50/60/80 W 120TW= 60/90/100/120W	UNIV=120 - 347 VAC	BR=Bronze NR=Black	P=Photocell

Ordering Example: PQ-WKDZ2-3CCTK-120TW-UNIV-BR-P

ACCESSORIES (Sold separately)

Picture	Item	Description
	PQ-WKDZ2-A-GS-11 in	Glare Shield for 11" fixture
	PQ-WKDZ2-A-RP-PMS	Plug-in Microwave Motion Sensor
	PQ-WKDZ2-A-RP	Remote controller