

# LASER BEAM

## PQ-IL

This projector light is an excellent alternative for all lines that were traditionally created using traditional methods such as tape or paint. It's a great pick for all places where, due to heavy traffic, floor damage or other limitations classic solutions are ineffective and fade away quickly.



### LASER BEAM

MODEL	Color Temperature (CCT)	Power (W)	Beam Angle	Dimensions (mm)	Input voltage (V)
PQ-IL	Green	9W	110°	205 x 139.5 x 84	120V = AC85-305V
	Red	10W	109°		

# LASER BEAM

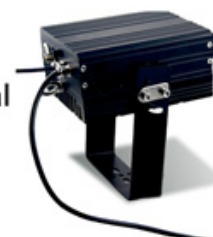
PQ-IL

## SPECIFICATIONS

<b>Power (W)</b>	9W	10W
<b>Input Voltage (V)</b>	85-305VAC	
<b>Color Temperature (CCT)</b>	Green	Red
<b>Output Power</b>	0-4 mW	
<b>Wavelength</b>	520nm (1000mw)	638nm (1200mw)
<b>Beam Angle</b>	110°	109°
<b>Operating Temperature</b>	-10°C to +60°C	
<b>Weight</b>	4.3kg	
<b>Dimensions</b>	205 x 139.5 x 84 mm (Witout bracket)	



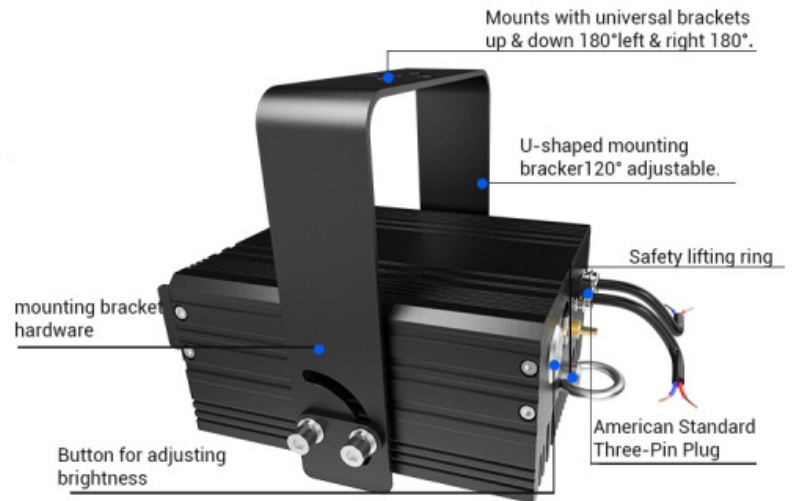
Two Colors Optional



# LASER BEAM

PQ-IL

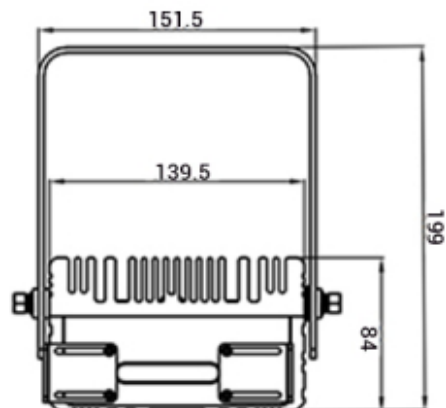
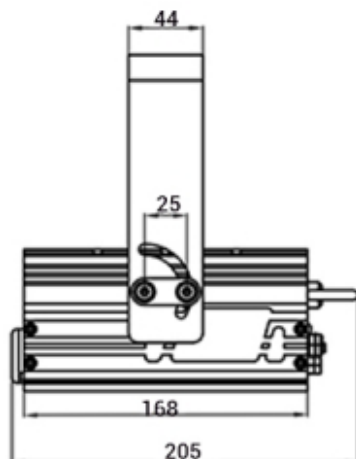
## FEATURES



1. The line length at 1m is about 3.2-3.3m.
2. The light brightness is adjustable.
3. The length of the beam is adjustable.
4. Wavelength: 520nm(Green) / 638nm(Red).
5. U-shaped lifting bracket installation (or with additional universal bracket) and lifting ring installation.



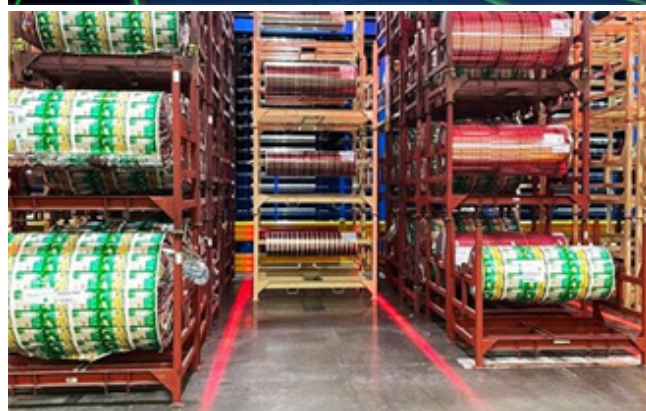
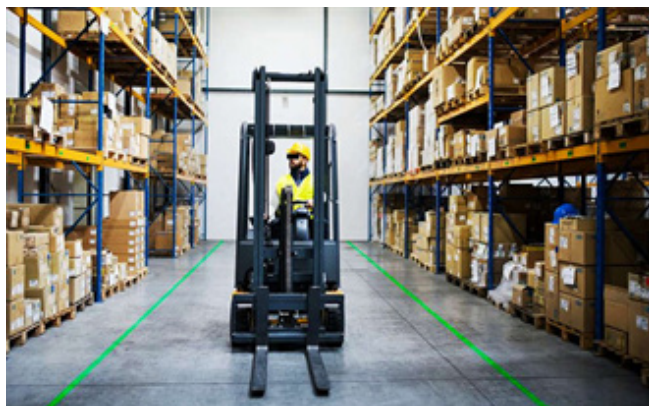
## DIMENSIONS (IN MM)



# LASER BEAM

PQ-IL

## APPLICATIONS



## INSTRUCTIONS FOR ORDERING

MODEL	Color Temperature (CCT)	Power (W)	Input voltage (V)	Beam Angle
PQ-IL	GREEN	009W	120V = AC85-305V	110D = 110°
	RED	010W		109D = 109°

**Catalog Number for Example: PQ-IL-GREEN-009W-120V-110D**

If you have specific technology or service needs, it's highly recommended that you get in touch with Power-Q's experts. They can provide tailored solutions and guidance based on your specific requirements.

**EMAIL:** [info@power-q.ca](mailto:info@power-q.ca)

**PHONE:** 514 667-6810